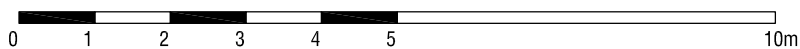




**MANSARDA:**

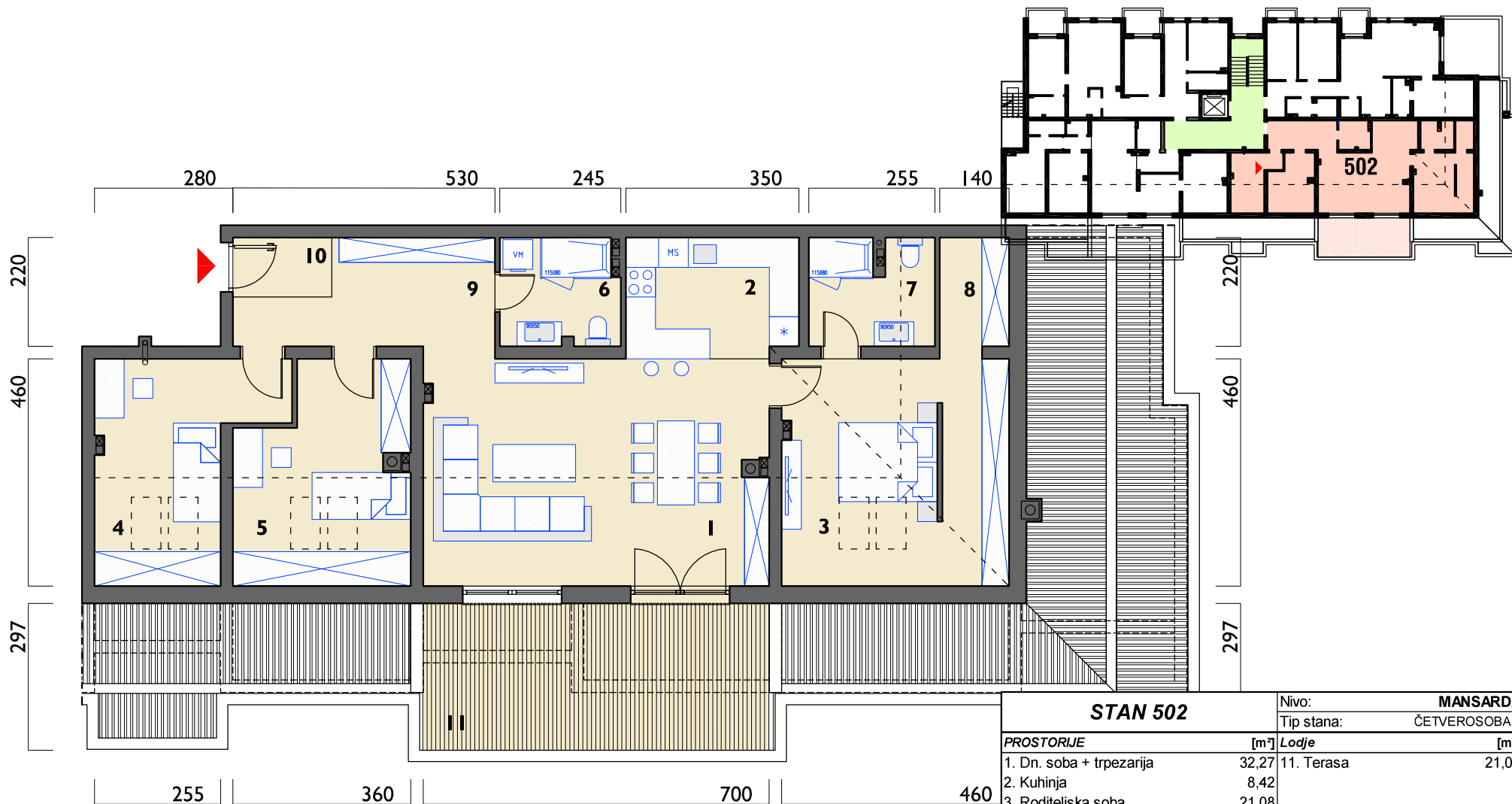
No.	NAZIV	POVRŠINA [m <sup>2</sup> ]
1.	Stan 501:	99,41 m <sup>2</sup>
2.	Stan 502:	120,62 m <sup>2</sup>
3.	Stan 503:	100,26 m <sup>2</sup>
4.	Stan 504:	98,44 m <sup>2</sup>

# Stambeni objekat **KORIĆANKA I** - Gračanica

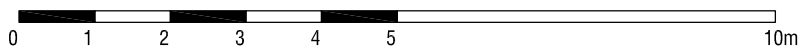


<b>STAN 501</b>		Nivo: <b>MANSARDA</b>	
		Tip stana: <b>ČETVEROSOBAN</b>	
<i>PROSTORJE</i>	[m <sup>2</sup> ]	<i>Lodje</i>	[m <sup>2</sup> ]
1. Dn. Soba	16,21	12. Terasa	19,92
2. Kuhinja	8,06		
3. Trpezarija	9		
4. Roditeljska soba	16,58		
5. Soba 1	13,67		
6. Soba 2	15,31		
7. Kupatilo 1	4,01		
8. Kupatilo 2	3,08		
9. Vešeraj	1,75		
10. Degažman	2,1		
11. Ulaz	4,66		
<b>Ukupna NETTO pov.[m<sup>2</sup>]</b>	<b>94,43</b>	0,25x	<b>4,98</b>
<b>Ukupno STAN 501</b>			<b>99,41</b>

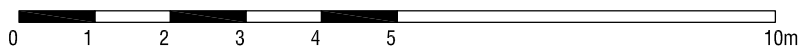
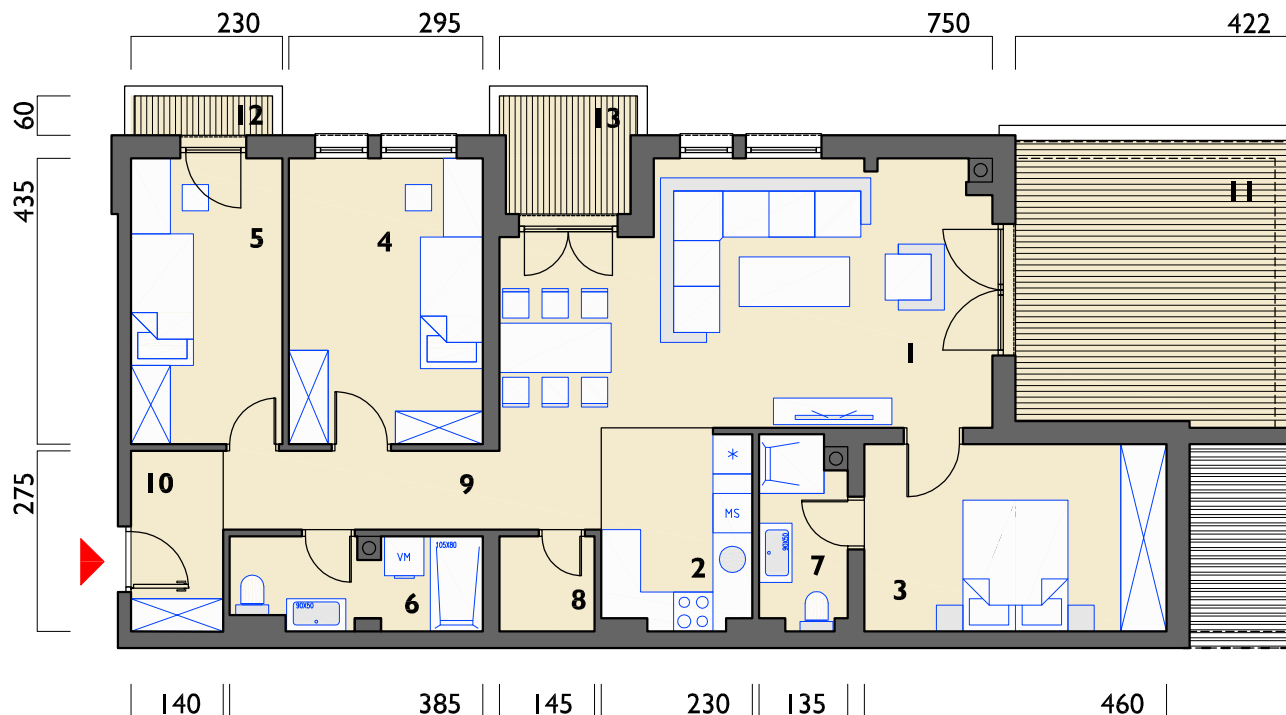
# Stambeni objekat KORIĆANKA I - Gračanica



<b>STAN 502</b>		Nivo:	<b>MANSARDA</b>
		Tip stana:	ČETVEROSOBAN
<b>PROSTORJE</b>	[m <sup>2</sup> ]	<b>Lodje</b>	[m <sup>2</sup> ]
1. Dn. soba + trpezarija	32,27	11. Terasa	21,01
2. Kuhinja	8,42		
3. Roditeljska soba	21,08		
4. Soba 1	13,54		
5. Soba 2	14,52		
6. Kupatilo 1	5,18		
7. Kupatilo 2	5,41		
8. Gardarober	3,29		
9. Hodnik	9,26		
10. Ulaz	2,4		
<b>Ukupna NETTO pov.[m<sup>2</sup>]</b>	<b>115,37</b>	0,25x	<b>5,2525</b>
<b>Ukupno STAN 502</b>			<b>120,62</b>

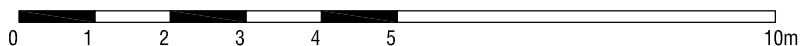
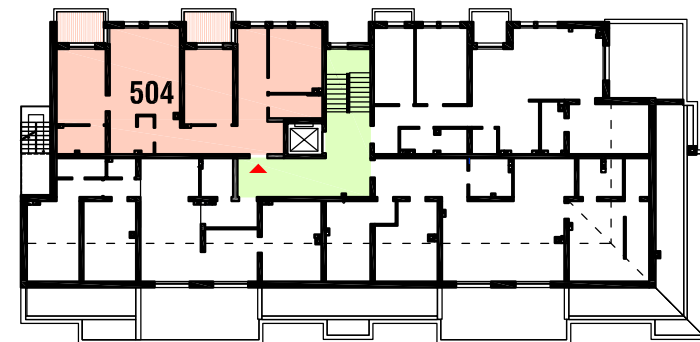
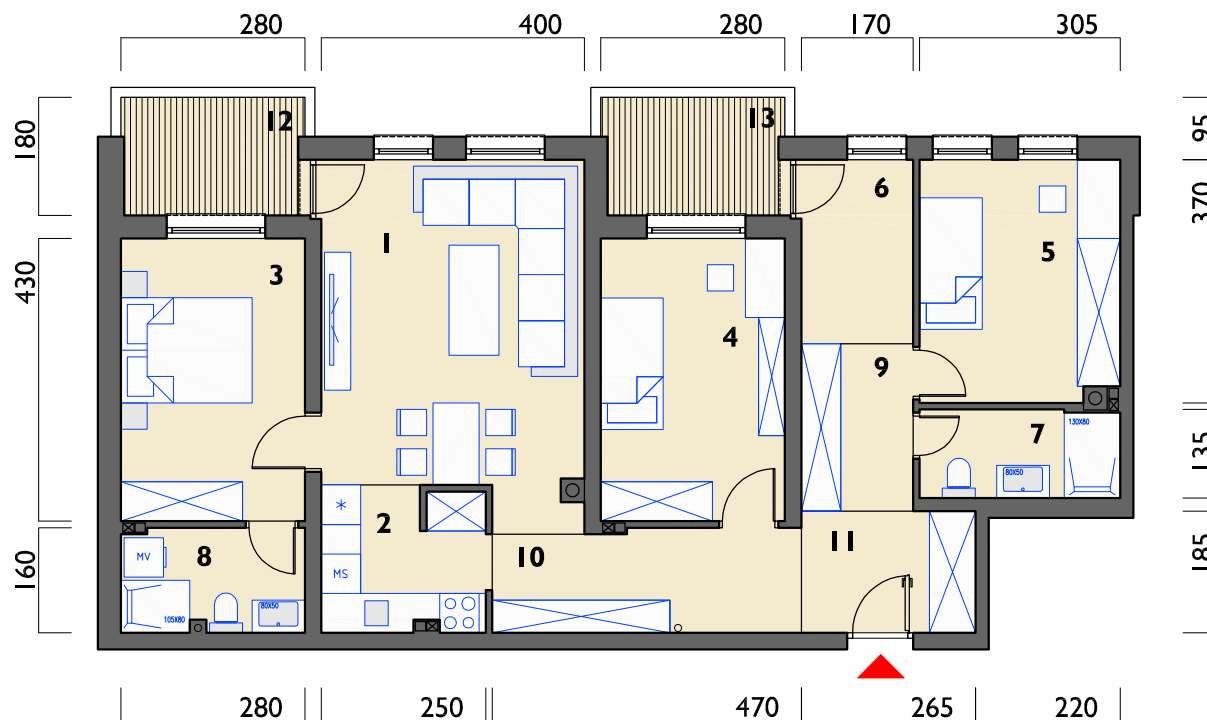


# Stambeni objekat KORIĆANKA I - Gračanica



<b>STAN 503</b>		Nivo:	<b>MANSARDA</b>
		Tip stana:	ČETVEROSOBAN
PROSTORIJE	[m <sup>2</sup> ]	Lodje	[m <sup>2</sup> ]
1. Dn. soba + trpezarija	30,26	11. Terasa	18,02
2. Kuhinja	6,68	12. Balkon	1,26
3. Roditeljska soba	13,11	13. Lodja	3,54
4. Soba 1	12,83		
5. Soba 2	10,01		
6. Kupatilo 1	5,16		
7. Kupatilo 2	3,73		
8. Ostava	2,11		
9. Hodnik	5,04		
10. Ulaz	3,85		
Ukupna NETTO pov.[m <sup>2</sup> ]	<b>92,78</b>	0,25x	<b>7,475</b>
<b>Ukupno STAN 503</b>			<b>100,26</b>

# Stambeni objekat **KORIĆANKA I** - Gračanica



<b>STAN 504</b>		Nivo:	<b>MANSARDA</b>
		Tip stana:	ČETVEROSOBAN
<b>PROSTORIJE</b>	[m <sup>2</sup> ]	<b>Lodje</b>	[m <sup>2</sup> ]
1. Dn. soba + trpezarija	20,72	12. Lodja 1	4,86
2. Kuhinja	5,47	13. Lodja 2	4,8
3. Roditeljska soba	12,04		
4. Soba 1	12,04		
5. Soba 2	11,14		
6. Radni prostor	4,76		
7. Kupatilo 1	4,08		
8. Kupatilo 2	4,39		
9. Degažman	4,33		
10. Hodnik	7,32		
11. Ulaz	4,9		
Ukupna NETTO pov.[m <sup>2</sup> ]	<b>91,19</b>	0,75x	<b>7,245</b>
<b>Ukupno STAN 504</b>			<b>98,44</b>